

## Works for Jandorf Lamp Sockets:

- #60400 – Keyless (Rated: 660W-250V) – Nickel
- #60401 – Push Through (Rated: 660W-250V) – Nickel
- #60402 – On/Off Turn Knob (Rated: 250W-250V) – Nickel
- #60403 – 3-Way Turn Knob (Rated: 250W-250V) – Nickel
- #60404 – On/Off Pull Chain (Rated: 250W-250V) – Nickel
- #60405 – 3-Way Pull Chain (Rated: 250W-250V) – Nickel

## What's Inside

1 – Lamp Socket (C)

## What's Its Purpose

Provides electrical contact for light bulb.

## What's Needed

Screwdriver

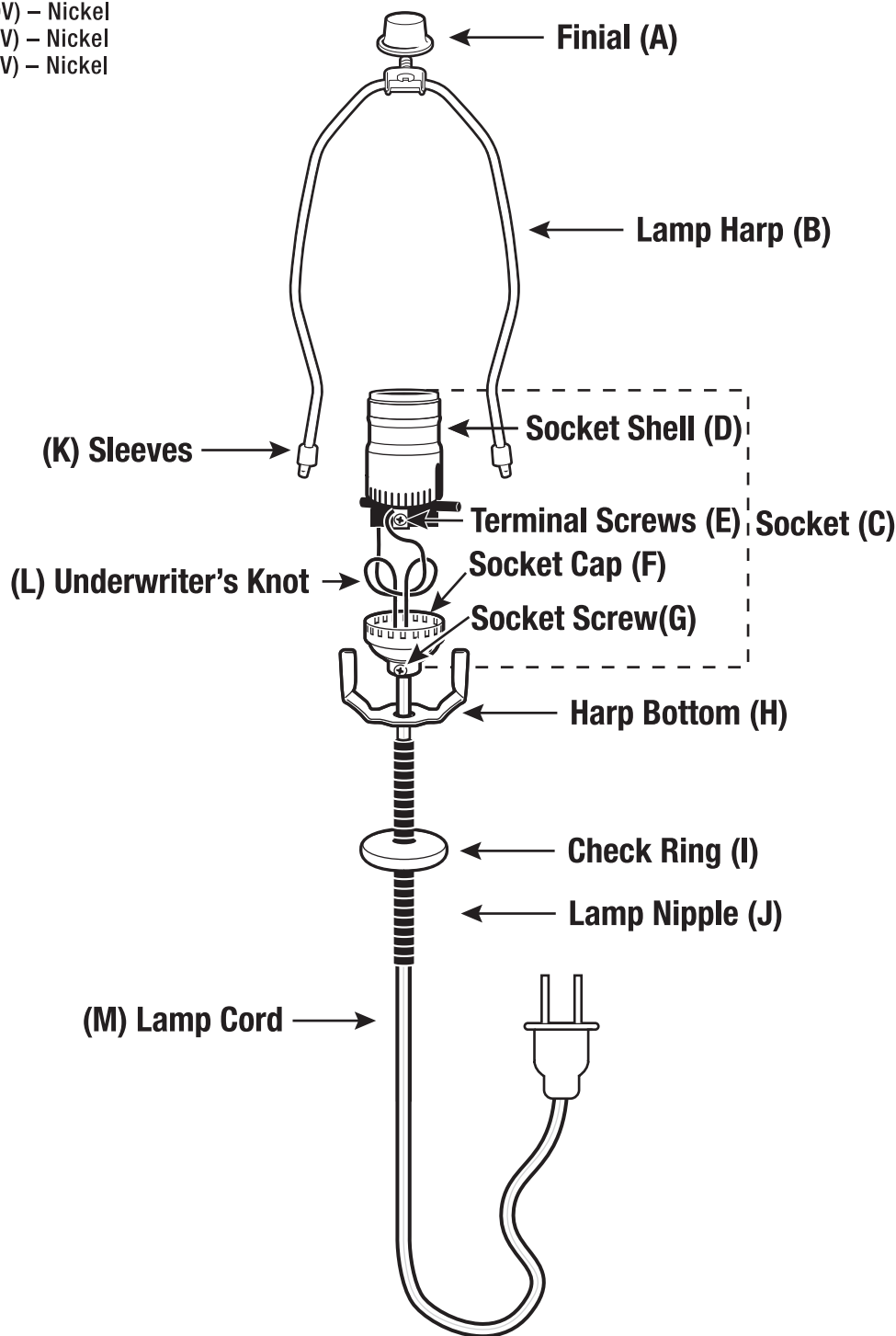
Wire Stripper

Use only with #16 or #18 AWG  
 stranded copper wire.

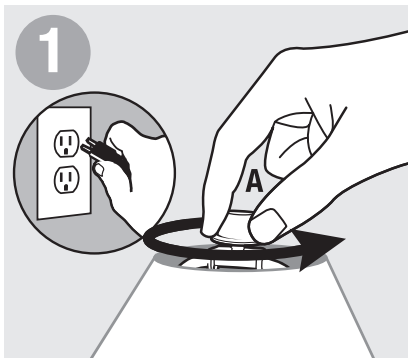
## WARNING

- Before beginning **TURN OFF POWER** by unplugging lamp from wall outlet.
- Follow local electrical regulations or codes when installing and using this product.
- Deviation from the assembly instructions may result in a **risk of fire or electric shock.**

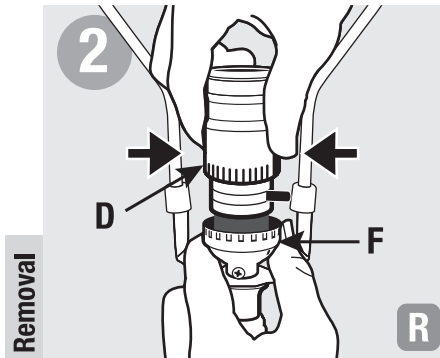
## Project Overview



# LAMP Socket

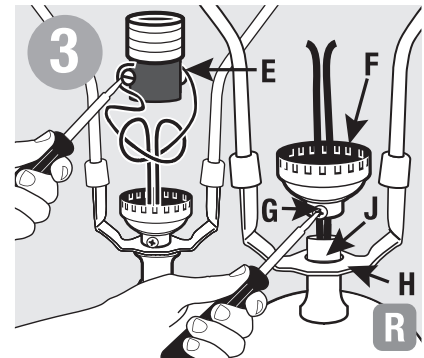


Before beginning **TURN OFF POWER** by unplugging lamp from wall outlet. Unscrew finial (A), remove lamp shade and bulb.

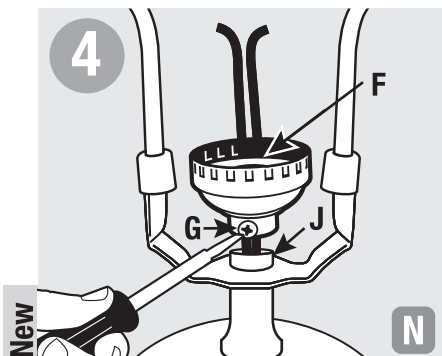


**Removal**

On socket that is to be replaced, press sides of socket shell (D); rock shell back and forth and lift up to remove from socket cap (F).

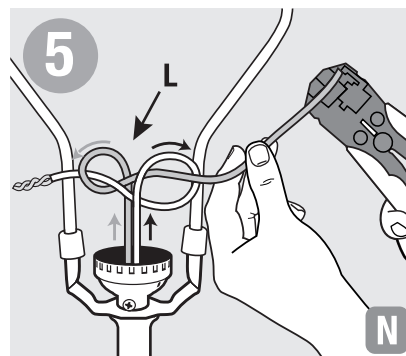


Unscrew terminal screws (E) to release wires. Unscrew socket screw (G). Unscrew old cap (F) from lamp nipple (J) and remove.

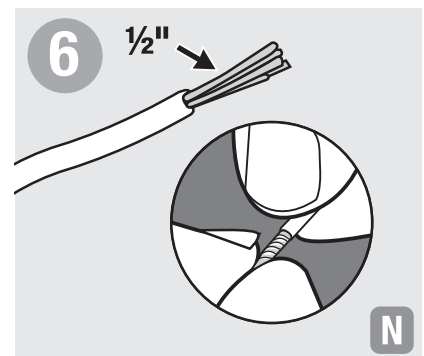


**New**

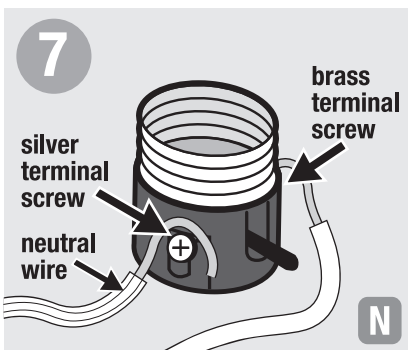
Insert wires through bottom of new socket cap (F). Thread new socket cap onto lamp nipple (J) and tighten. Tighten socket screw (G). Cardboard insulation disc should be firmly in bottom of socket cap (F).



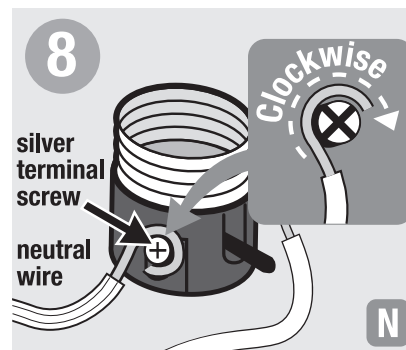
Split cord about 2" from end and tie an Underwriter's knot (L).



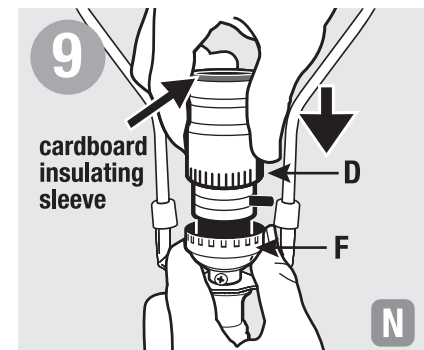
Using wire stripper, expose 1/2" of bare copper strands from cord. Twist copper strands tightly together.



Connect ribbed neutral wire (feel outside of cord for ribbing) around silver terminal screw. If no ribbing, determine neutral wire and connect around silver terminal screw. Connect smooth wire around brass terminal screw.



Wrap each wire clockwise 3/4 turn under head of terminal screw. Tighten screws. Cut loose strands.



Ensure cardboard lining is in place, then fit socket shell (D) into socket cap (F) by gently rocking side-to-side, until shell snaps into place with clicking sound.