

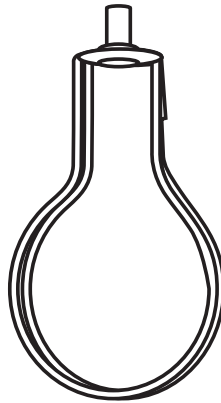
Lamp Shade Adapter #60120

What's Inside

1 – Clip-on Lamp Shade Adapter – Brass Finish

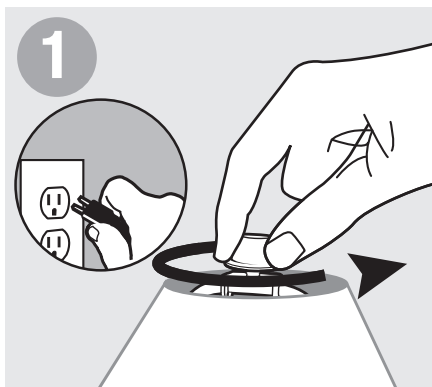
What's Its Purpose

Secures lamp shade to bulb.

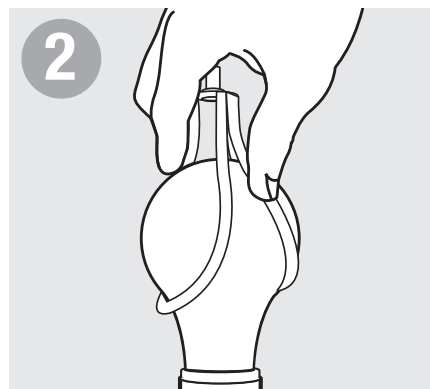


WARNING

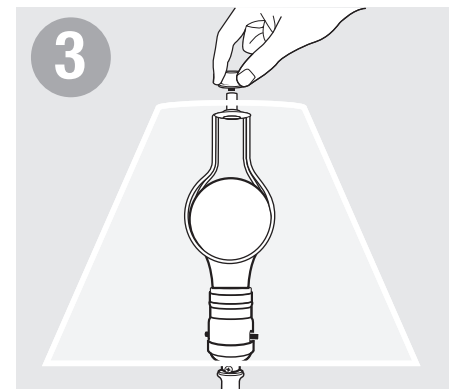
- Before beginning **TURN OFF POWER** by unplugging lamp from wall outlet.
- Follow local electrical regulations or codes when installing and using this product.
- Light bulbs generate heat – maintain manufacturer's recommended space between shade and bulb.
- For use with Type A bulbs.



1
Before beginning **TURN OFF POWER** by unplugging lamp from wall outlet. Unscrew finial and remove lamp shade.



2
Gently slide lamp shade adapter over standard "A" bulb.



3
Place lamp shade over threaded stud and secure with finial.