

## Works for Jandorf Swag Kits:

- #60260 – Polished Brass
- #60261 – Antique Brass
- #60262 – White

## What's Inside

- 1 – 15' Chain (A)
- 1 – 20' SPT-1 Cord with Polarized Plug (18 Gauge) (B)
- 1 – Feed-Through Cord Switch (3A 125V) (C)
- 2 – Swag Hooks (D)
- 2 – Hanger Bolts (E)
- 2 – Threaded Studs (F)
- 2 – Spring Toggle Wings (G)

## What's Needed

- Drill
- Screwdriver

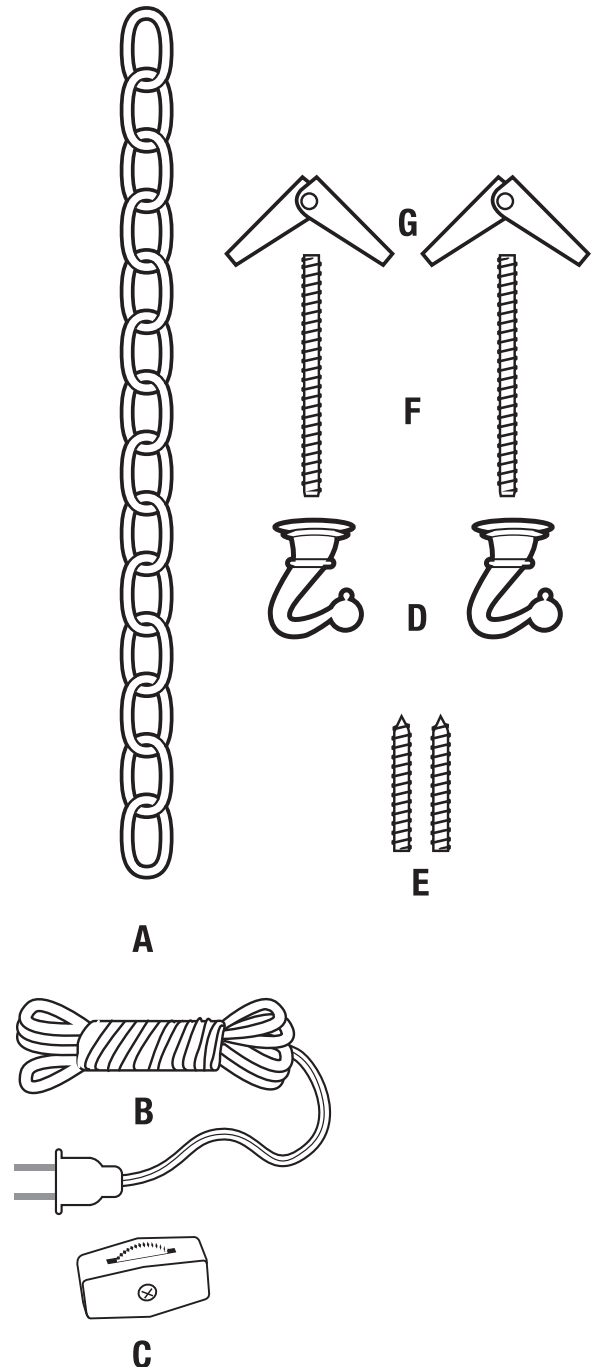
## What's Its Purpose

Hanging light fixture when there is no overhead electrical source.

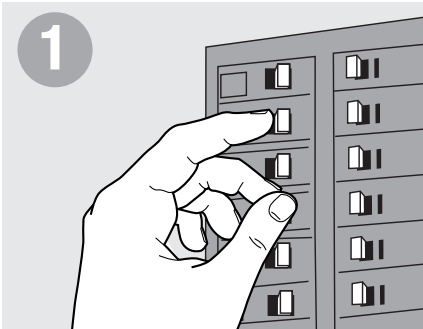
## Warning

- Before beginning **TURN OFF POWER** to the light from the fuse or circuit breaker.
- Follow local electrical regulations or codes when installing and using this product.
- Surface to be mounted to should be structurally sound to support a minimum of 30 lbs. Weight of all materials should not exceed 15 lbs. Jandorf is not responsible for the ceiling strength of plaster or drywall.
- **CAUTION:** To reduce the risk of fire or electric shock, when installing feed-through cord switch, do not strip wires – Cut off end of cord cleanly.
- Deviation from the assembly instructions may result in a **risk of fire or electric shock.**

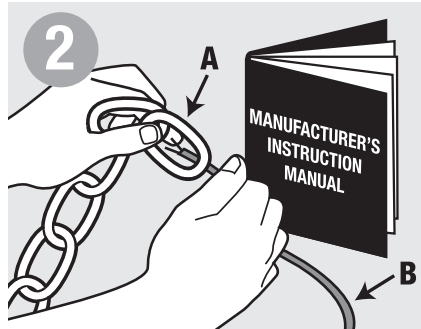
## Project Overview



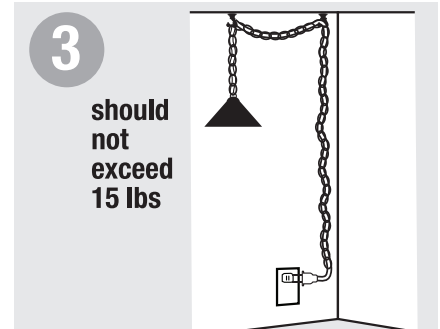
# CEILING Swag Kit



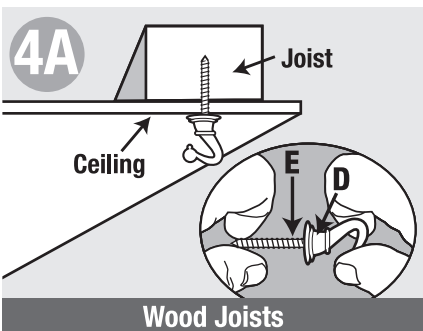
1 Before beginning **TURN OFF POWER** to the light from fuse or circuit breaker.



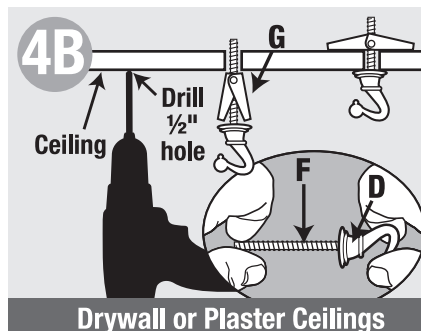
2 Thread the spliced end of cord (B) through chain (A) by going through every 4th or 5th link. Connect cord to fixture, following recommended fixture manufacturer's instructions.



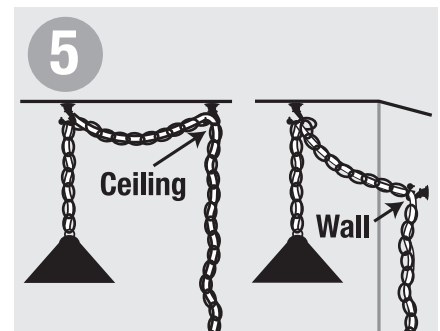
3 **should not exceed 15 lbs**  
Determine placement of light. It is best to screw into stud, but toggle bolt can be used on plaster or drywall ceiling that is structurally sound to support minimum of 30 lbs. Weight of all materials should not exceed 15 lbs.



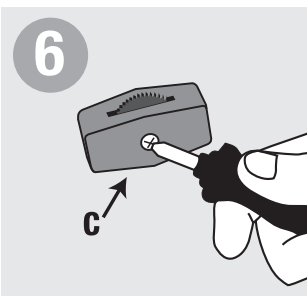
4A **Wood Joists**  
Thread hanger bolt (E) into swag hook (D). Tighten until hanger bolt reaches bottom of hole in swag hook. Screw entire ensemble into joist until flush with ceiling.



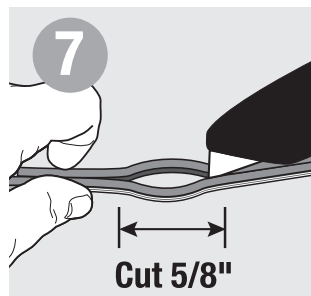
4B **Drywall or Plaster Ceilings**  
Drill 1/2" hole into ceiling. Thread threaded stud (F) into swag hook (D). Tighten until threaded stud reaches bottom of hole in swag hook. Thread threaded stud through channel side of spring toggle wing (G). Fold wings downward and push through drilled hole. Tighten until swag hook is securely in place and flush with ceiling.



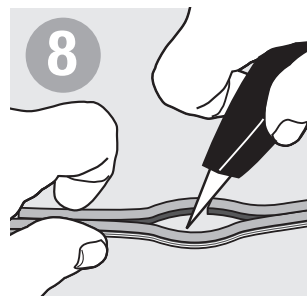
5 Place second spring hook on either ceiling or wall depending on your configuration.



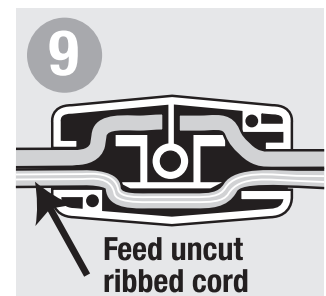
6 Unscrew nut to separate switch (C).



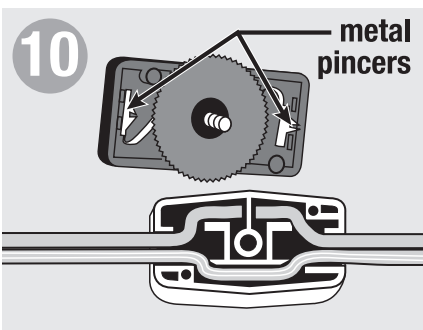
7 Where switch is to be located, cut 5/8" slit through insulation between conductors. Do not expose wire.



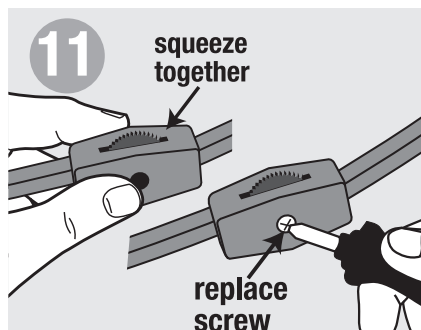
8 Cleanly cut non-ribbed wire in half at center of slit. Do not strip wire.



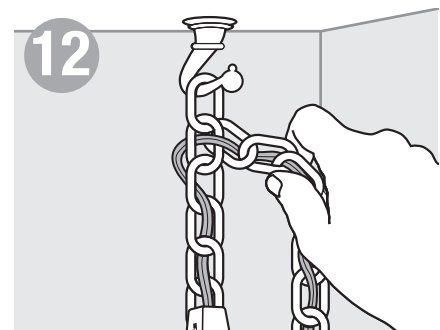
9 **Feed uncut ribbed cord**  
Place uncut ribbed cord in open channel of hollow half of switch. Tuck two cut ends of non-ribbed cord into top portion.



10 When switch halves are combined, cut portion of wire should contact metal pincers.



11 **squeeze together**  
**replace screw**  
Place two switch halves together until they touch. Replace screw; securely tighten nut.



12 Slide chain onto swag hook. Support weight of luminaire or fixture by the chain, not wire. Do not drape wire over hook.