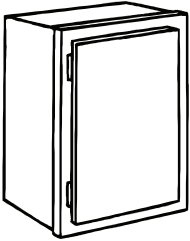
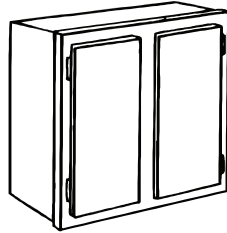


WALL CABINETS

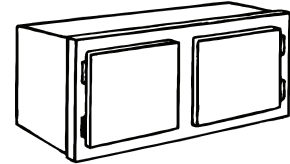
(12" deep unless noted otherwise)



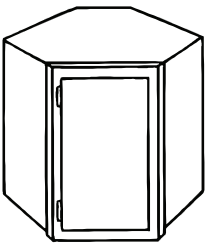
12" w x 30" h
15" w x 30" h
18" w x 30" h
21" w x 30" h
24" w x 30" h



30" w x 30" h
36" w x 30" h

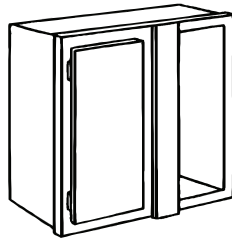


30" w x 15" h
36" w x 15" h
30" w x 18" h



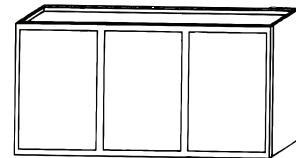
Diagonal Wall
24" w x 30" h

*When installing allow
24" of wall space*



Blind Corner
24" w x 30" h

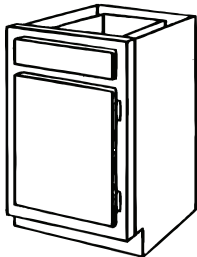
*When installing allow
27" of wall space*



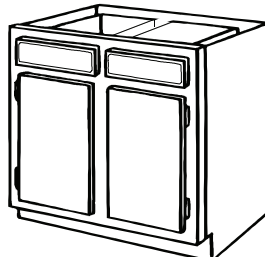
Laundry
54" w x 24" h

BASE CABINETS

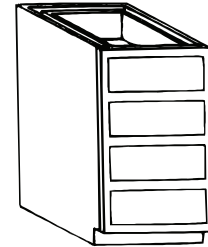
(24" deep unless noted otherwise)



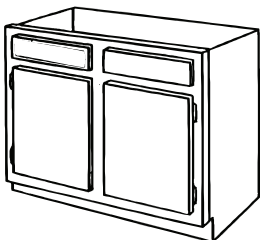
12" w x 34 1/2" h
15" w x 34 1/2" h
18" w x 34 1/2" h
21" w x 34 1/2" h
24" w x 34 1/2" h



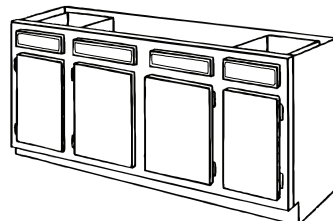
30" w x 34 1/2" h
36" w x 34 1/2" h



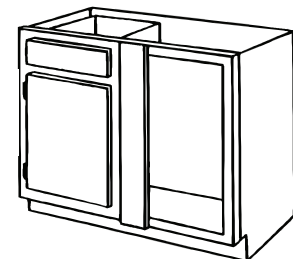
Drawer Base
15" w x 34 1/2" h
18" w x 34 1/2" h



Sink Base
36" w x 34 1/2" h



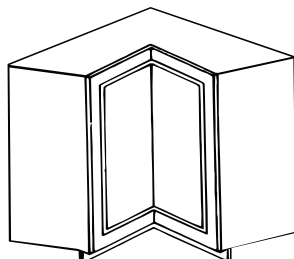
Sink Base
60" w x 34 1/2" h



Blind Corner
36" w x 30" h

*Actual Dimensions:
30" w x 34 1/2" h*

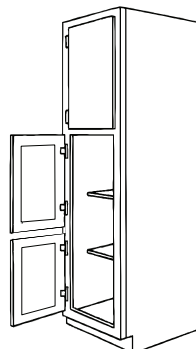
*When installing
allow 36" of wall
space*



Lazy Susan
36" w x 34 1/2" h

*Actual Dimensions:
30" w x 18" d*

*When installing allow
36" of wall space by
pulling the LS 6" away
from the corner*



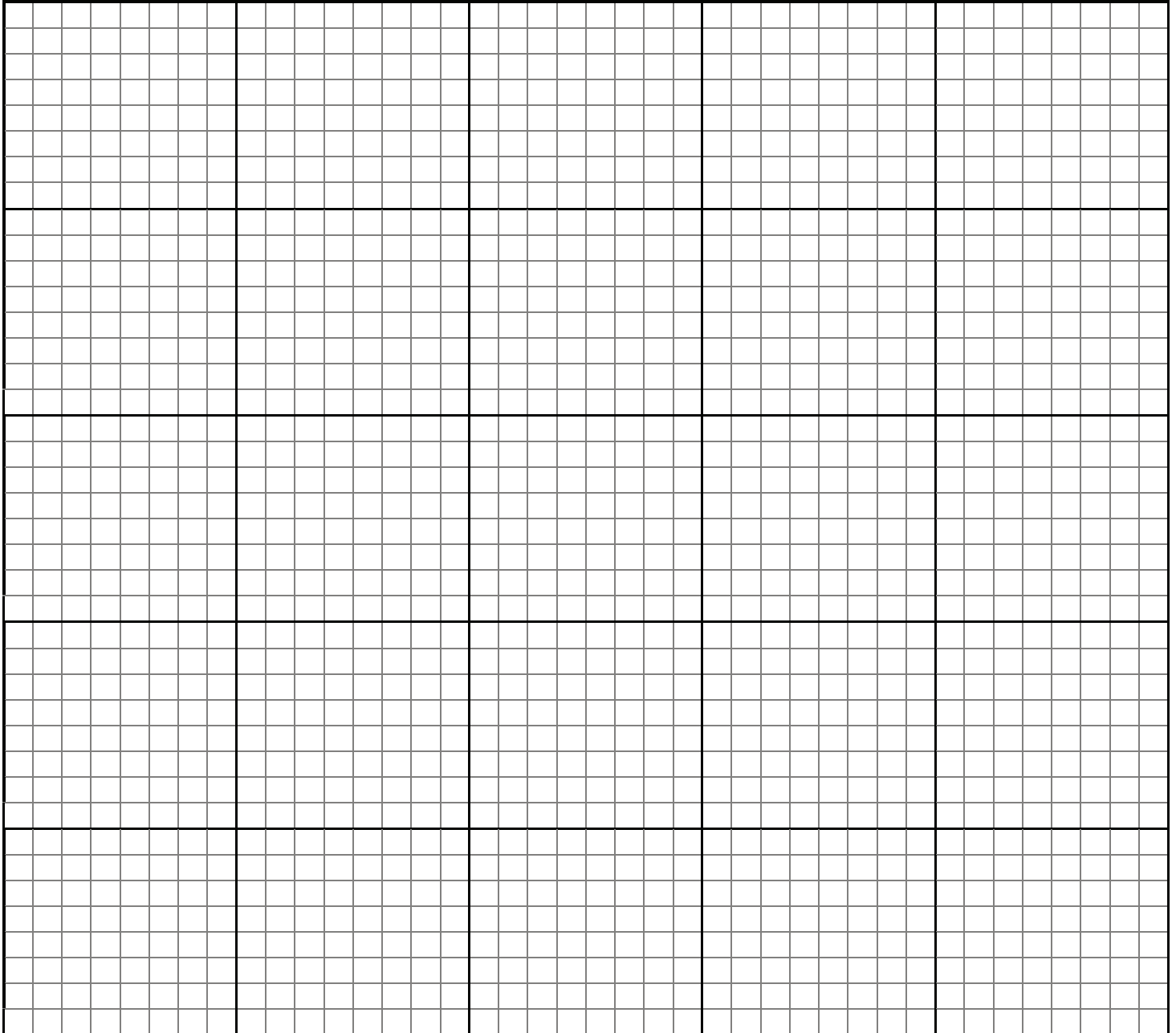
Utility Cabinet
18" w x 84" h x 24" d

AVAILABLE ACCESSORIES

Wall End Panel
Base End Panel
Utility End Panel
Universal Filler
Valance
Toe Kick

HOW TO DESIGN YOUR ROOM

- 1. Measure The Entire Room-** Using the grid provided; record the length of each wall in your room. Each small square equals three inches, or one large square equals two feet. Measure all breaks in the walls, such as doors and windows. Measure from the corner of the wall to the outside edge of the moulding. Remember to indicate placement of the fixtures such as air vents and permanent appliances measuring to the centerline of plumbing, ducting and outlets, indicating each on the grid.
- 2. Create The Floor Plan-** Using the measurements you placed on the grid, begin drawing your cabinets from the available cabinet sizes listed on the flip side of this sheet. Start in the corner of the layout and work to the far walls. Consider convenience in your planning. It is often desirable to place the dishwasher next to the sink, and the sink within steps of the refrigerator and stove.
- 3. Final Steps-** You may wish to review your layout with a kitchen designer at the store from which you are purchasing your cabinets. They can assist you in your planning, offer suggestions on a layout and recommend accessories.



1 Square = 3"